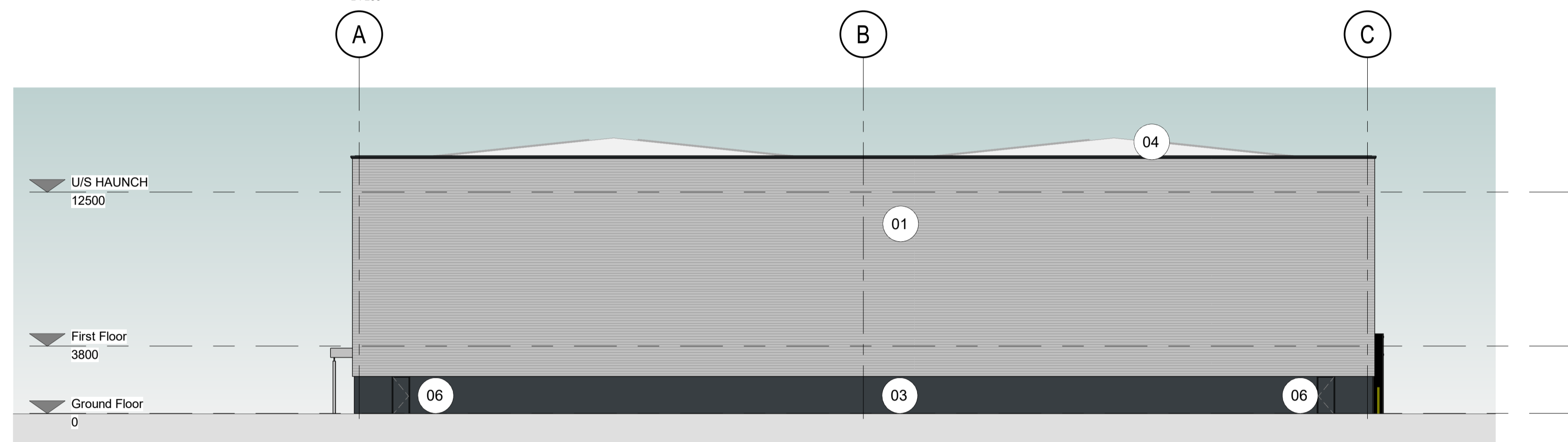
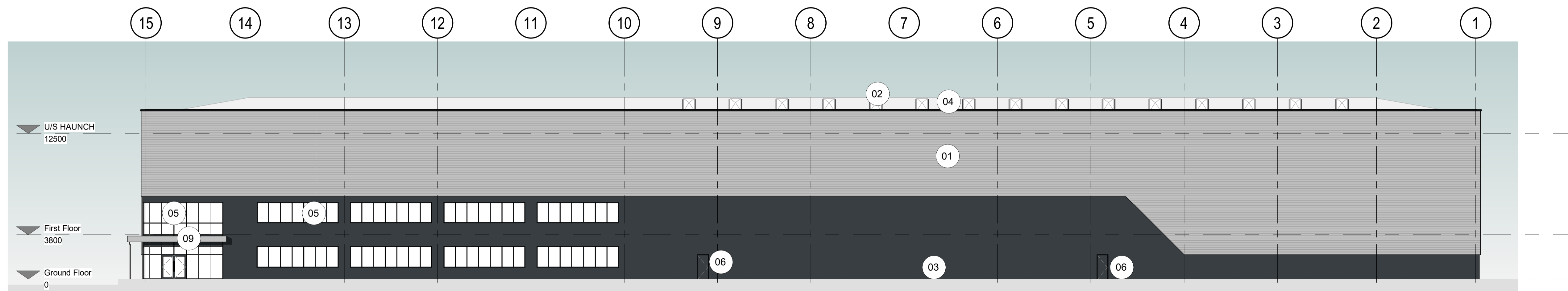


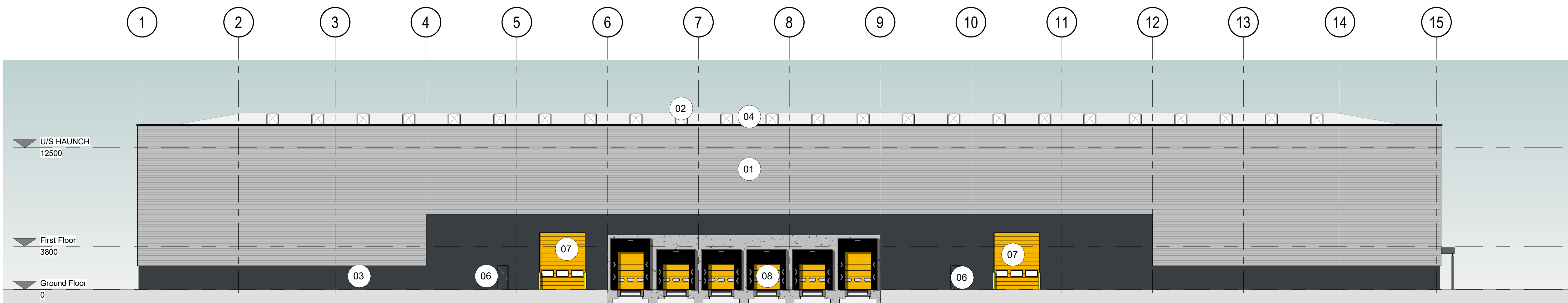
**West Elevation**  
1: 200



**East Elevation**  
1: 200



**South Elevation**  
1: 200



**North Elevation**  
1: 200



**General Notes**

Do not scale from this drawing. Only work to written dimensions.  
All site dimensions shall be verified by the Contractor on site prior to commencing any works.  
This drawing is the property of Fletcher-Rae (UK) Limited (t/a Fletcher-Rae) and copyright is reserved by them. The drawing is not to be copied or disclosed by or to any unauthorised persons without the prior written consent of Fletcher-Rae (UK) Limited.

**Materials Key:**

- 01 Profiled metal cladding horizontally laid  
Colour: RAL 9006 (Light Grey/Silver)
- 02 Rooflights
- 03 Micro rib metal cladding vertically laid  
Colour: RAL 7016 (Anthracite)
- 04 Profile metal roof cladding  
Colour: RAL 7038 (Goosewing Grey)
- 05 PPC aluminium curtain walling with aluminium spandrel panels  
Frame colour: RAL 7016 (Anthracite)  
Spandrel colour: RAL 7016 (Anthracite)
- 06 Insulated steel personnel door  
Colour: RAL 7016 (Anthracite)
- 07 Level access loading door  
Colour: Yellow
- 08 Dock Leveller loading door with dark grey dock shelter  
Colour: Yellow
- 09 Canopy over main entrance doors
- 10 PPC Aluminium Louvre  
Colour: To match adjacent cladding

P2	Planning Issue	16.12.21	AL	AT
P1	First Issue	03.12.21	AL	AT
Rev.	Description	Date	ISS	APP

Scale: As indicated  
Status: @ A1ormation  
Drawn By: AL  
Checked By: AT  
Date: 03.12.21

Client: **Redsun Projects Ltd**  
Project: **Hortonwood 45 Telford**  
Sheet Name: **Unit 4 - Proposed GA Elevations**